

ESHAPort Manual

USING ESHAPORTSQL

Introduction

ESHAPortSQL is a utility for exporting and importing database files for ESHA Research programs. Delimited ASCII text files can be imported to become either data files (recipes, formulations, etc.) or Food Item files (ingredients, finished foods, etc.).

Existing files can be exported as delimited ASCII text files. In addition, files can be analyzed "on the fly" during exporting, and the finished analysis of each recipe or formulation can be exported.

Whether you are exporting or importing, the ASCII text files use the same means for delineating the data fields. Each data field is separated by a user-specified character (such as a comma), and text (string) fields are delimited by a different user-specified character (such as a quotation mark).

You can export and import as few or as many fields as you want. However, some fields are essential to the importing process; the program needs these to translate the data and use it effectively.

(Note: ESHA coded ingredients are proprietary and cannot be exported.)

Installation

Note: Do not uninstall previous version.

Insert the CD into your CD Rom drive. Follow the instructions on-screen.

- If the instructions don't automatically appear, go to the Start Menu and choose Run. Type in d:/setup.exe and press Enter.

The rest is automatic.

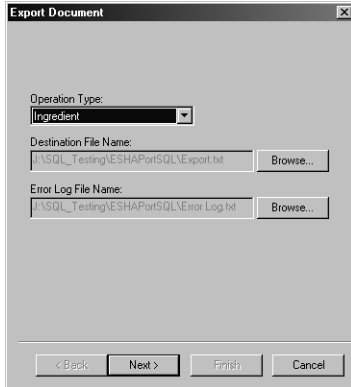
Starting the Program

To start the program, double-click the ESHAPort icon on your desktop or go to **Start>ESHA>ESHAPort**.

When the program starts, a welcome screen will appear asking you which operation to perform.

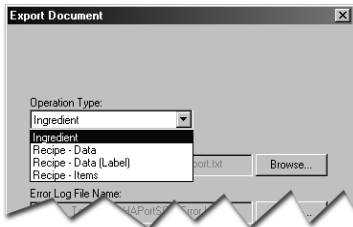


Exporting data



To set export document information

1. Do one of the following:
 - Go to **File>New>Export**;
 - OR
 - Choose the New icon and select **ESHAPort export**;
 - OR
 - Select **New Export** from the Welcome screen.
2. Select which type of files to export:



Ingredient

Select this to export ingredient information. This can include all information, i.e., name, size, calories, user code, etc.

Recipe – Data

Select to export Recipe information such as Name, Key, cost, calories, weight, etc.

Recipe – Data (Label)

Select this to export the Recipe data in Label format.

Recipe – Items

Select this to export the items (ingredients) of the Recipe. This will export items only... not nutrition analysis.

3. Set Destination File Name and destination, if necessary.
4. Set Error Log File Name and destination, if necessary.
5. Click **Next**.

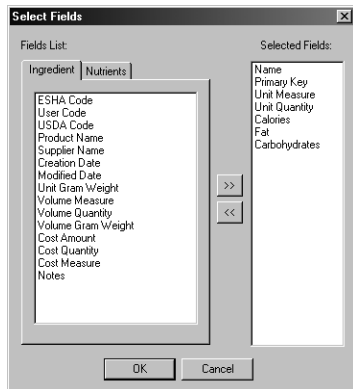
Select Fields



When you first use the program, there will be a required list of Fields for exporting.

To edit the list

1. Select **Edit**.



The Ingredient fields include codes, names, keys, weight, cost, etc. The Nutrients Fields include all available nutrients.

2. In the left (Fields List) pane

- Double-click on the item to add
- or
- Highlight the item and select the add (>>) button

Continue in this manner until all Ingredient and Nutrient fields you wish to export have been added

3. Use your mouse to arrange items in the right pane by dragging them up and down (Selected Fields).
4. Click **OK**.
5. Click **Next**.

Selection Criteria

You have the option of exporting all records, exporting records by key number or exporting records per multiple criteria. This section acts as a search. The options listed help you refine your export list.

EXPORTING ALL RECORDS

To export all records

1. Choose Select all Records
2. Click **Next**

EXPORTING BY KEY FILE

A Key File is a user-created text document of a set of specific (Recipe or Ingredient) records wherein each line is a unique item. For example, a file may consist of all Recipes for chili.

Items in the file may be listed as their:

- User Code
- Name
- Primary Key
- Etc.

To export by Key File

1. Choose **Select by Key File**
2. Click **Browse**.
3. Browse to find the desired text (.txt) file.
4. Click **OK**.
5. Click **Next**.

EXPORTING BY MULTIPLE CRITERIA

You can choose to select records by Name, Creation Date, Modify Date and/or Group. When you Select by Multiple Criteria, you must check the box next to the criterion you wish to use.

Name

Type in the name for the items to export. *Ex: chick will find and export all items with chick in the name*

Creation Date

Choose a Creation Date range.

Modified Date

Choose a Modified Date range.

Groups

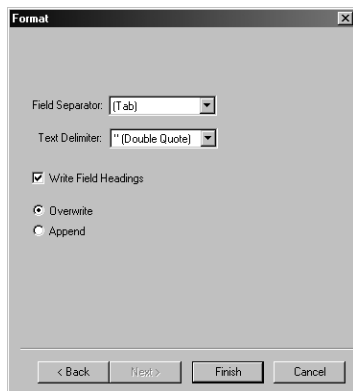
1. Click Select
2. Check the box next to the group (or groups) you wish to export from.

Include Empty Rows

This option applies to any field selected for export that may be empty (depending on whether the user entered values in these areas), including:

- User code
- Cost amount
- Cost quantity
- Cost measure
- Notes
- Ingredient statement

If you deselect "Include Empty Rows" any records with empty fields (listed above) will NOT be included in the export.

Field Separators & Text Delimiters

On the format dialog box are two selection boxes where you can set the field separator and text delimiter characters.

The field separator is placed between each of the imported or exported data fields. It is initially set as a comma (,). To change it, choose the desired character from the pull-down list.

The text delimiter is used to designate a text (string) field. It is initially set as a pipe (vertical line symbol "|").

For example, if you exported a recipe using the default settings, it would look something like the following:

```
|Granola|,|Raisins|,1.5,3,4
|Granola|,|Almonds|,4,2,6
```

|Granola|,|Coconut|,4,6,2

Here the recipe name |Granola| appears on each line, followed by the ingredient name, followed by three numeric fields (quantity, measure code, and one other numeric data element).

To set format

1. Select the preferred field separator and text delimiter
2. Check the box to write field headings automatically
3. Click **Finish**.

At this point, the program lets you double-check the export parameters by reviewing each tab before executing the export. If you find a mistake, you can edit it.

- The Export tab lists selection criteria and destination file name.
- The Selected Fields tab shows which fields will be exported
- The Export Documents tab lists the records that have been selected for export per criteria specified. It's a good idea to look over this list before executing.
- The Destination File tab shows a list of records to be exported along with their data fields specified. It's a good idea to look over this list before executing.
- The Error Log file shows the name and location of the error log IF one was created.

To edit Export parameters

1. Click **Edit**
2. Select which settings to Edit.
3. Click **OK**.
4. When specifications are exact, click **Execute**.

After executing, a dialog box will appear telling you the export was successful.

To save this set of export criteria

1. Click **Save**
2. Name the file
3. Browse to select where to save it.
4. Click **Save**.

Importing data

To import Data

1. Do one of the following:
 - Go to **File>New>Import**
or
 - Choose the New icon and select ESHAPort Import.
or
 - Click New Import on the Welcome window.

2. Select which operation type:
 - **Ingredient – Create**
 - **Ingredient – Update**
 - **Recipe – New**
 - **Recipe - Update**
3. Set Destination File Name and destination, if necessary.
4. Set Error Log File Name and destination, if necessary.
5. Select the proper course of action from the available options for matching items.
6. Click **Next**

Select Fields



When you first use the program, there will be a required list of Fields for exporting.

The order of the Selected Fields MUST match exactly the order of the fields in the file to be imported.

Keep in mind, for ESHAPort to import a new Ingredient, it requires certain data fields. These are:

- **Ingredient Name**
- **Gram Weight**

For ESHAPort to import a Recipe, it requires certain data fields. These are:

- **Recipe Name**
- **Ingredient Names**
- **Quantity (amount)**
- **Quantity unit of measure**

and a least one of the following fields:

- **Item User Code**
- **Item ESHA Code**
- **Item Primary Key**

Note: When importing a Recipe, the program reads the data, constructs a Recipe record, and then attempts to locate each item in the ingredient database for its nutrient data. If there is an ESHA code, it locates the item in the ingredient database by that unique code. If there is no ESHA code, then it tries to locate the item using the unique User Code. If there is no User Code, then it searches for the Ingredient Name.

To create your own list

1. Follow the instructions on Page EP-3.
2. Click **Next**.

To set format

1. Select the preferred field separator and text delimiter
2. Check the box to write field headings automatically
3. Click **Finish**.

At this point, the program lets you double-check the import parameters by reviewing each tab before executing the import. If you find a mistake, you can edit it.

- The Settings tab lists selection criteria and destination file name.
- The Selected Fields tab shows which fields will be exported
- The Source file tab shows the records that have been selected for import per criteria specified. It's a good idea to look over this list before executing.
- The Error Log file shows the name and location of the error log IF one was created.

To edit Import parameters

1. Click **Edit**
2. Select which settings to Edit.
3. Click **OK**.
4. When specifications are exact, click **Execute**.

After executing, a dialog box will appear telling you the import was successful.

To save this set of import criteria

1. Click **Save**
2. Name the file
3. Browse to select where to save it.
4. Click **Save**.

Opening Existing Imports and Exports

Once you've created an Import or Export file and saved it, you can go back and open it at any point.

To Open and existing Import or Export file

1. Do ONE of the following:

- Go to **File>Open**
or
 - Click the **Open icon**
or
 - Select **Open** from the Welcome screen
2. Browse to find the EshaPort file (.epf)
 3. Click **Open**.

Edit as necessary and continue with the export/import as discussed previously in this chapter.

Command Line Parameters

The Command Line Parameters are:

-File <.epf extension FileName> - ESHAPort document file to open follows command.

DontClose - If this option is set then doesn't not close program when finished with batch otherwise program will close when document finishes execution.

CreationFrom=<Date> OR **CF**=<Date> - Enter creation from date.

CreationTo=<Date> OR **CT**=<Date> - Enter creation to date.

ModifiedFrom=<Date> OR **MF**=<Date> - Enter modified from date.

ModifiedTo=<Date> OR **MT**=<Date> - Enter modified to date.

All commands are case insensitive so FILE, file, File, CREATIONFROM, cf would all be valid commands

Dates must be in format MM/DD/YYYY

Example:

ESHAPort.exe -File TestFile.epf DontClose CreationFrom=10/15/2000

CT=10/15/2004

MF=10/15/2000 ModifiedTo=10/15/2000

INDEX**A**

All Records, exporting, EP-4
ASCII text, EP-1

C

Create list of fields, EP-3
Criteria, multiple, exporting per, EP-5
Criteria, selection, EP-4

D

Data Importing, EP-8
Data, exporting, EP-2
Default list of Fields, EP-3
Document information, set, EP-2

E

Edit Export parameters, EP-6
Execute, EP-6
Export document information, set, EP-2
Export parameters, edit, EP-6
Export set of criteria, save, EP-6
Exporting all records, EP-4
Exporting data, EP-2
Exporting by Key File, EP-4
Exporting by multiple criteria, EP-5

F

Field Separators, EP-5
Fields, create list of, EP-3
Fields, default list, EP-3
Fields, record order of, EP-3
Fields, select, EP-3, EP-7
Format, set, EP-8

I

Import new data, EP-8
Import requirements, EP-7
Importing data, EP-8
Information, set, EP-2
Ingredient – Create, EP-8
Ingredient – Update, EP-8
Ingredient, EP-2
Installation, EP-1

Introduction, EP-1

K

Key file, EP-4
Key File, exporting by, EP-4

L

List of fields, default, EP-3

M

Multiple criteria, exporting per, EP-4

N

New Data, Import, EP-6

O

Order of the Selected Fields, EP-7

P

Program, starting, EP-1

R

Recipe – Data (Label), EP-2
Recipe – Data, EP-2
Recipe – Items, EP-2
Recipe – New, EP-2
Recipe - Update, EP-6
Requirements, import, EP-7

S

Save set of export criteria, EP-6
Selection Criteria, EP-4
Select Fields, EP-7
Select Fields, EP-3
Selected Fields, order of, EP-7
Set export document information, EP-2
Set Format, EP-8
Starting the Program, EP-1

T

Text Delimiters, EP-5
Text, ASCII, EP-1

U

Using ESHAPort SQL, EP-1